

Available
NOW!



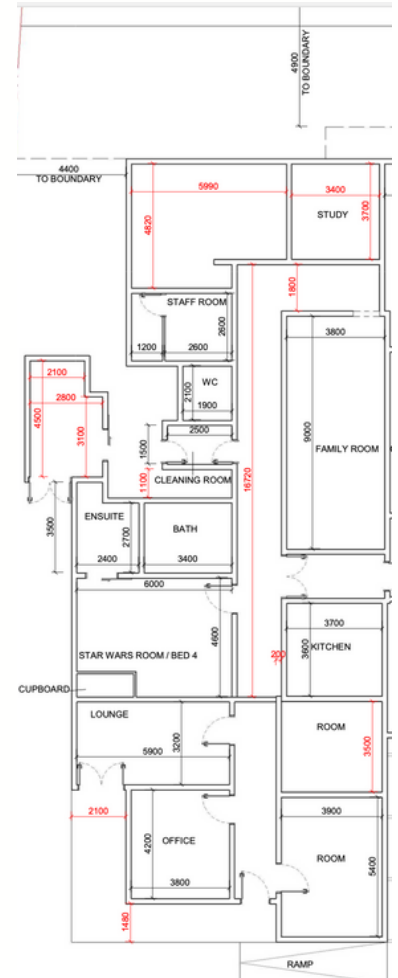
Vacancy	Bedrooms	Bathrooms	Wheelchair Accessible	SDA funding	Location
1	5	3		No	Semaphore, SA

Property Overview

This large 5-bedroom group home has one vacancy. Located in Semaphore, the home has plenty of space for everyone, with a large shared living space, 3 accessible bathrooms and an outdoor entertainment/verandah area where you can enjoy views of the garden.

Vacancy information

- 24/7 support with passive overnight service
- One vacant bedroom.
- Shared kitchen and living.
- A shared home with four housemates.
- Clients can access other DLI services for additional support (if funded).



Ask us about our vacancies



Provider



☎ 08 8132 5400

✉ referrals@dli.org.au

🌐 dli.org.au

Local Area

- 300m to Semaphore beach.
- 150m to bus stops.
- 1.2km to train stations.
- 350m to Semaphore's cafe, cinema and shopping precinct.
- 7.5km to the Queen Elizabeth Hospital
- 4km to Westfield West Lakes.

Bedroom Features

- Good size bedroom for privacy.
- Classic home features
- Heating and Cooling

*DLi carefully match clients with other people who share similar interests and goals.

Applicant Considerations

- This home has a combination of males and females from a variety of age groups.
- To apply for this vacancy, you will need to have pre-approved NDIS SIL Funding

Call us today! - 08 8132 5400

