



ExploreAbility

Adult

Are you looking for activities that provide you or someone you care for with opportunities to practice skills in a group setting?



Then it's time to explore!

Our ExploreAbility Adult stream harnesses the explorer within with leisure, adventure and recreational opportunities for high-support people aged 18 and over.

With a variety of community and centre-based activities during the week, on weekends and overnight short getaways, it is a great chance to learn and develop skills and friendships while having lots of fun.

**UPCOMING ACTIVITIES
AVAILABLE SOON!**



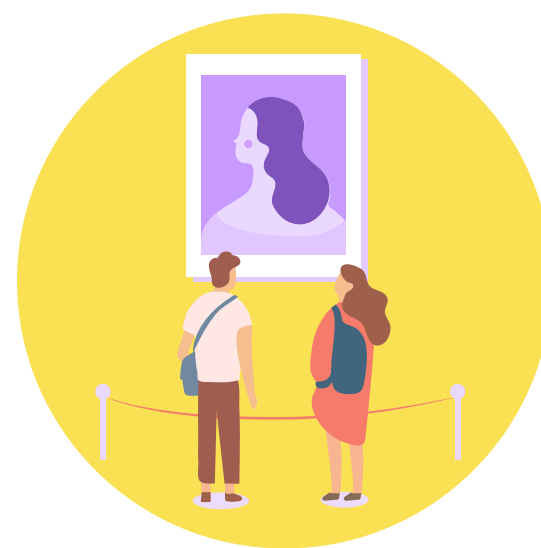
Here's what you need to know

Age requirements	<ul style="list-style-type: none">• For ages 18 years old
Ratio of Support	<ul style="list-style-type: none">• High-support at a 1:1 or 2:1 ratio of support
Days of service	<ul style="list-style-type: none">• Weekdays and Weekends• Short Getaways
Hours of service	<ul style="list-style-type: none">• 10:00 am - 4:00 pm (Getaways include overnight)
NDIS Funding requirements	<ul style="list-style-type: none">• Assistance with daily living (Core or capacity building)

Why choose ExploreAbility?

ExploreAbility supports the provision of additional benefits for participants, such as:

- Gross motor skills development
- Fitness and health
- Creating and maintaining social connections
- Enhance community engagement
- Motivation to try new things
- Increase independence by building confidence and self-esteem
- Overcome barriers to pursue goals and aspirations
- Develop creative and imaginative skills
- Develop problem-solving skills
- Develop cooperation and teamwork skills
- Enhance cognitive functioning and wellbeing
- Build strength and physical activity
- Experience companionship



Why choose DLi?

Selecting a provider for someone you care about is a BIG decision, but with over 35 years of experience, there are a few things you may not know about us:

- Solution oriented – We never say no until we have exhausted all possibilities to provide you with the support you want.
- Consistency – DLi provides a regular and consistent team of support workers to meet your and your child's needs.
- Quality assurance - NDIS registered provider who maintains all required insurances and ensures all support staff have the relevant and current certifications and qualifications.
- Regular reviews – Your feedback is extremely important. That is why we check in with you to ensure we provide the best support possible.
- Safeguarding – A specialised safeguarding team, including a nurse, psychologist and lawyer, reviews our daily operations to ensure we provide individualised supports, respect your individual values, uphold your privacy and confidentiality, and facilitate your independence.

