

Available  
NOW!



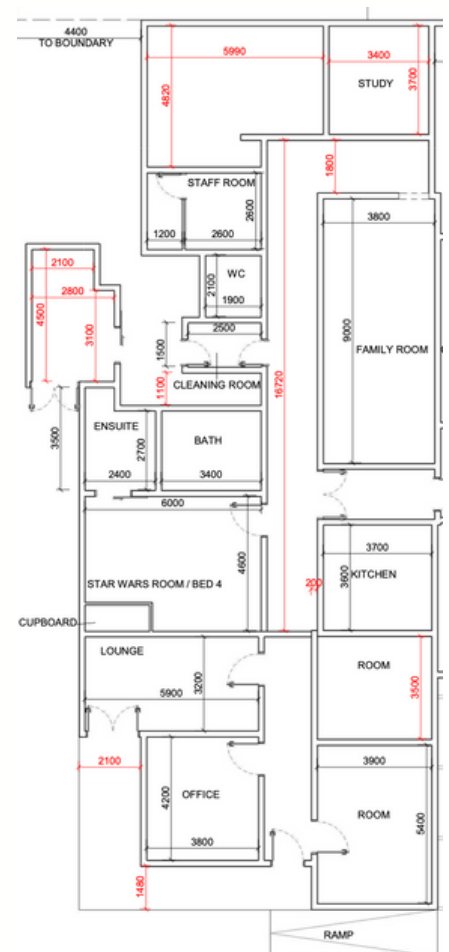
Vacancy	Bedrooms	Bathrooms	Wheelchair Accessible	SDA funding		
<b>1</b>	<b>5</b>	<b>3</b>		<b>No</b>		Semaphore, SA

## Property Overview

This large 5-bedroom home has one vacancy. Located in Semaphore, the home has plenty of space for everyone, with a large shared living space, 3 accessible bathrooms and an outdoor entertainment/verandah area where you can enjoy views of the garden.

## Vacancy information

- 24/7 support with passive overnight service
- One vacant bedroom
- Shared kitchen and living
- A shared home with four housemates
- Clients can access other DLI services for additional support (if funded)



# Ask us about our vacancies



## Provider



☎ 08 8132 5400

✉ referrals@dli.org.au

🌐 dli.org.au

## Local Area

- 300m to Semaphore beach
- 150m to bus stops
- 1.2km to train stations
- 350m to Semaphore's cafe, cinema and shopping precinct
- 7.5km to the Queen Elizabeth Hospital
- 4km to Westfield West Lakes

## Bedroom Features

- Good size bedroom for privacy
- Classic home features
- Heating and Cooling

\*DLi carefully match clients with other people who share similar interests and goals.

## Applicant Considerations

- This home has a combination of males and females from a variety of age groups
- To apply for this vacancy, you will need to have pre-approved NDIS SIL Funding

**Call us today! - 08 8132 5400**

