

Available
NOW!



Vacancy



Bedrooms



Bathrooms



Wheelchair
Accessible



SDA
funding



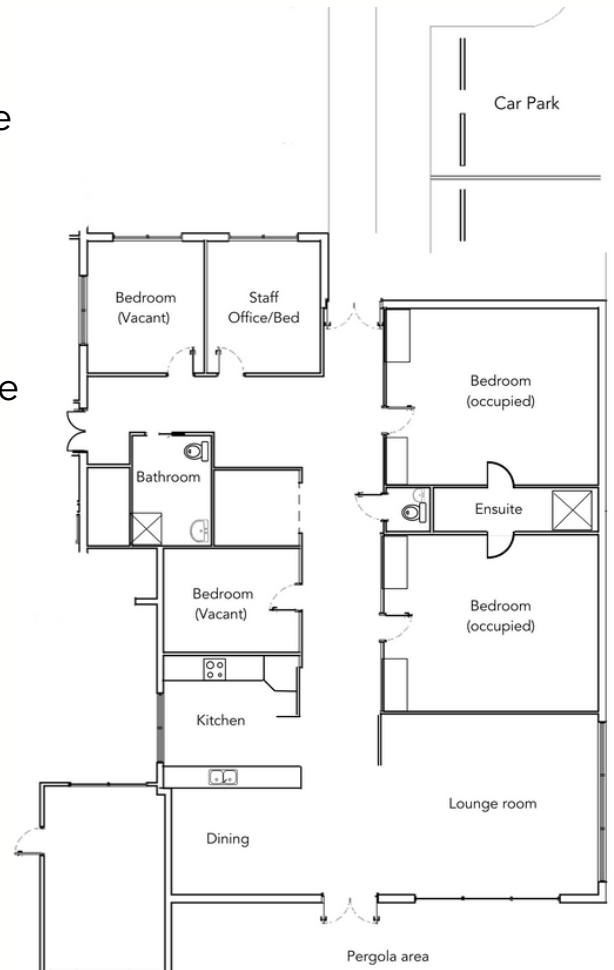
Semaphore
South, SA

Property Overview

Live in a sought-after western suburbs location, close to the popular Semaphore beach and cafe scene. This SIL property is ideal for individuals looking for the ultimate lifestyle experience. This large 4-bedroom home adjoins a DLi STA site with funded clients able to access a newly developed community participation space at the rear of the property. The property also boasts a large accessible garden, wide hallways and an open plan kitchen, dining and living area.

Vacancy information

- 24/7 support with passive overnight service
- One vacant bedroom
- Share house with three female housemates.
- A fully accessible vehicle (if required)
- Clients can access other DLi services for additional support (if funded)



Ask us about our vacancies



Provider



☎ 08 8132 5400

✉ referrals@dli.org.au

🌐 dli.org.au

*DLI carefully match clients with other people who share similar interests and goals.

Local Area

- 300m to Semaphore beach
- 200m to bus stops
- 1.5km to train stations
- 650m to Semaphore's cafe, cinema and shopping precinct
- 7.5km to The Queen Elizabeth Hospital
- 4km to Westfield West Lakes

Bedroom Features

- Recently painted
- Spacious rooms
- Lots of natural light
- Reverse Cycle Air Conditioning

Applicant Considerations

- This home is suited to a female with a 1:3 ratio of support
- The other occupants in this house are females aged between 30 - 50
- The current housemates enjoy socialising, cooking, arts, and animals
- NDIS funding is required
- To apply for this vacancy, you will need to have pre-approved SDA funding of Basic