

Semaphore 5

STA Vacancy



Vacancy



Bedrooms



Bathrooms



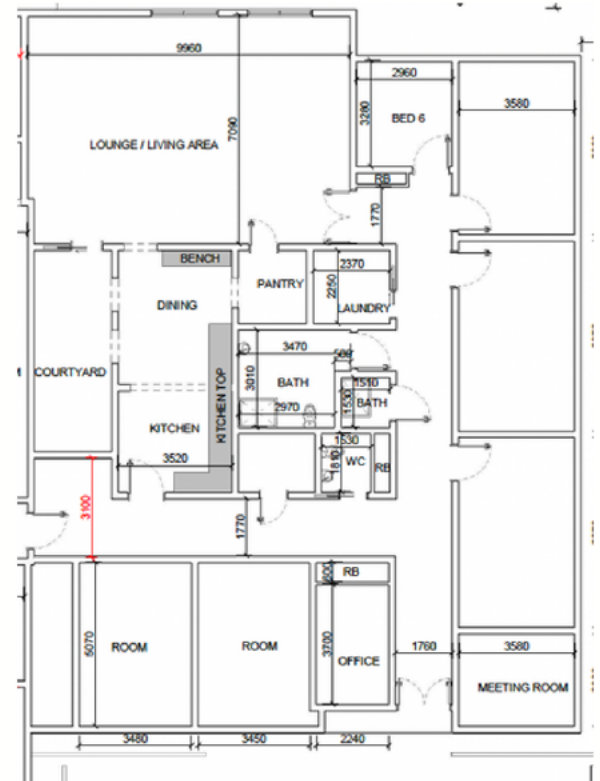
Wheelchair
Accessible



Semaphore, SA

Property Overview

This large 6-bedroom home has regular STA vacancies. Located in Semaphore, the home has plenty of space for everyone, with a large shared living space, three accessible bathrooms a courtyard and an outdoor entertainment/ verandah area where you can enjoy views of the garden.



Vacancy Information

- 24/7 support with passive overnight service
- Weekends and weekdays available
- A fully accessible vehicle (if required)
- Clients can access other DLi services for additional support (if funded)

For Enquiries 8132 5400 referrals@dli.org.au

Ask us about our vacancies



Provider



☎ 08 8132 5400

✉ referrals@dli.org.au

🌐 dli.org.au



Local Area

- 300m to Semaphore beach
- 150m to bus stops
- 1.2km to train stations
- 350m to Semaphore's cafe, cinema and shopping precinct
- 7.5km to the Queen Elizabeth Hospital
- 4km to Westfield West Lakes

Bedroom Features

- Good size bedroom for privacy
- Classic home features
- Heating and Cooling

*DLi carefully match clients with other people who share similar interests and goals.

Applicant Considerations

- This STA home is suited to males and females
- Weekends and weekdays available
- NDIS funding is required
- Ratio of support levels vary based on bookings

For Enquiries 8132 5400 referrals@dli.org.au

